

SCHINELLA.



2 Shirley Avenue Woodville West SA

3  **2**  **2** 

This beautiful character home is located in one of Woodville West's premier tree-lined streets. Conveniently close to public transport, local shops, the QEH & local schools and sporting facilities - this is a rare offering in a family-friendly locale.

Perfectly presented from front to back this residence seamlessly blends character and charm with modern conveniences, offering multiple living spaces for family living. With three bedrooms (main with ensuite & WIR, bedrooms two & three with BIR's), stunning main bathroom, formal lounge adjoining formal dining, updated kitchen with stainless steel appliances and open plan casual meals and family room with views to the rear yard.

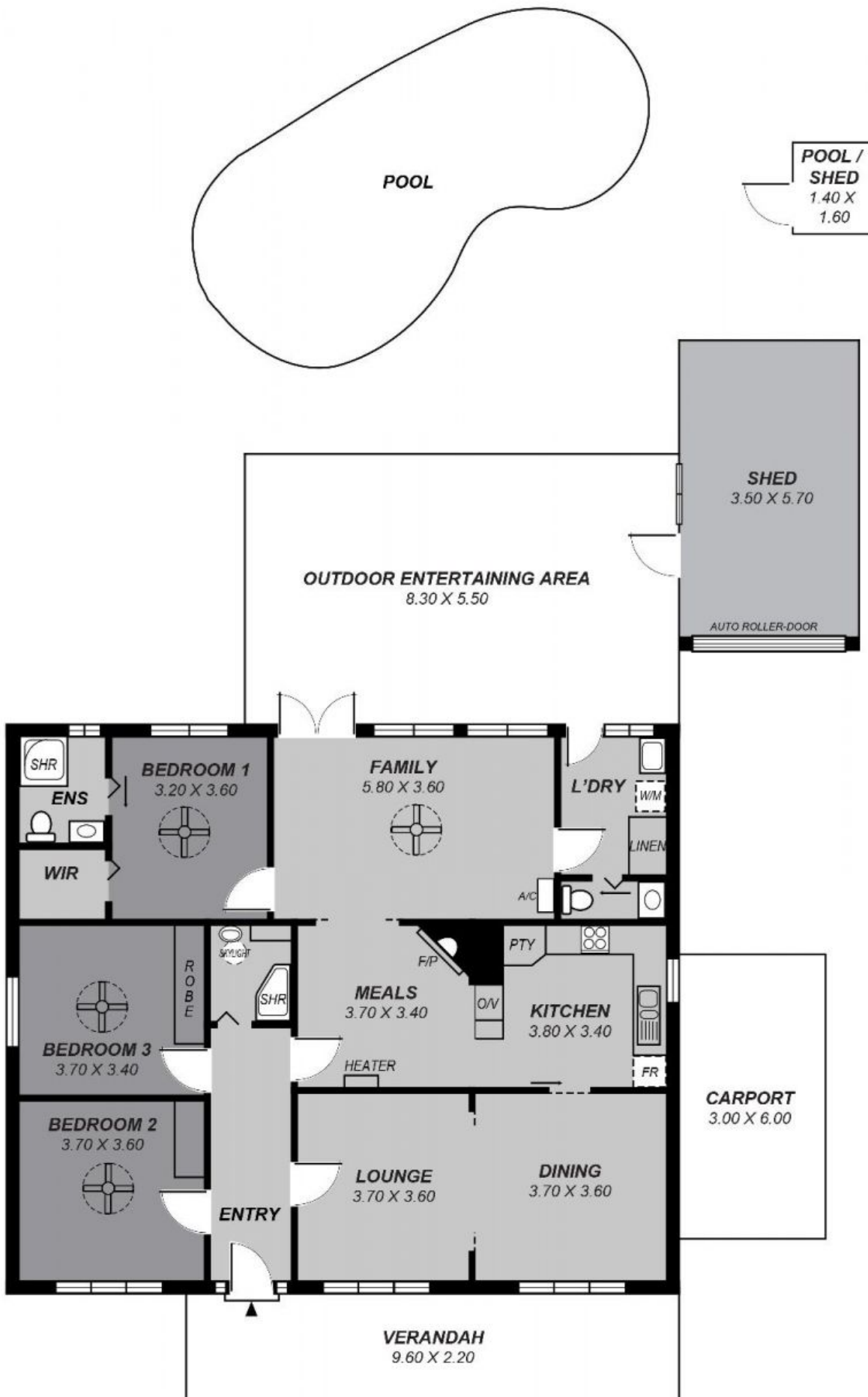
Type : House
Price : \$ 627,000
Land Size : 740 sqm
View : <https://www.schinellaproperty.com.au/5753456>



Damian Popowycz
0413 026 026

[For full version visit the website](https://www.schinellaproperty.com.au)

<https://www.schinellaproperty.com.au>



Area	m ²
Living:	137.61
Carport:	18.00
Outdoor:	45.65
Verandah:	21.12
Shed:	22.19
Total:	244.57

*This drawing is for illustration purposes only .
All measurements are approximate and details intended
to be relied upon should be independently verified.*