




SCHINELLA.



21 Claire Street Woodville West SA

5  2  2 

Positioned in a leafy tree-lined street, this classic character residence has an imposing street presence. The striking sandstone heritage facade fuses seamlessly with contemporary design and finishes, offering a spacious home designed for family living.

A grand entry hall offers the perfect welcome as you enter the home. The functional and flexible floorplan allows for up to five bedrooms (the grand master suite with walk-in robe and large ensuite with spa, and bedrooms two and three also with built-in wardrobes).

The bright kitchen features stainless steel appliances, a large walk-in pantry and overlooks the open living and dining area, which in turn opens to the expansive yet

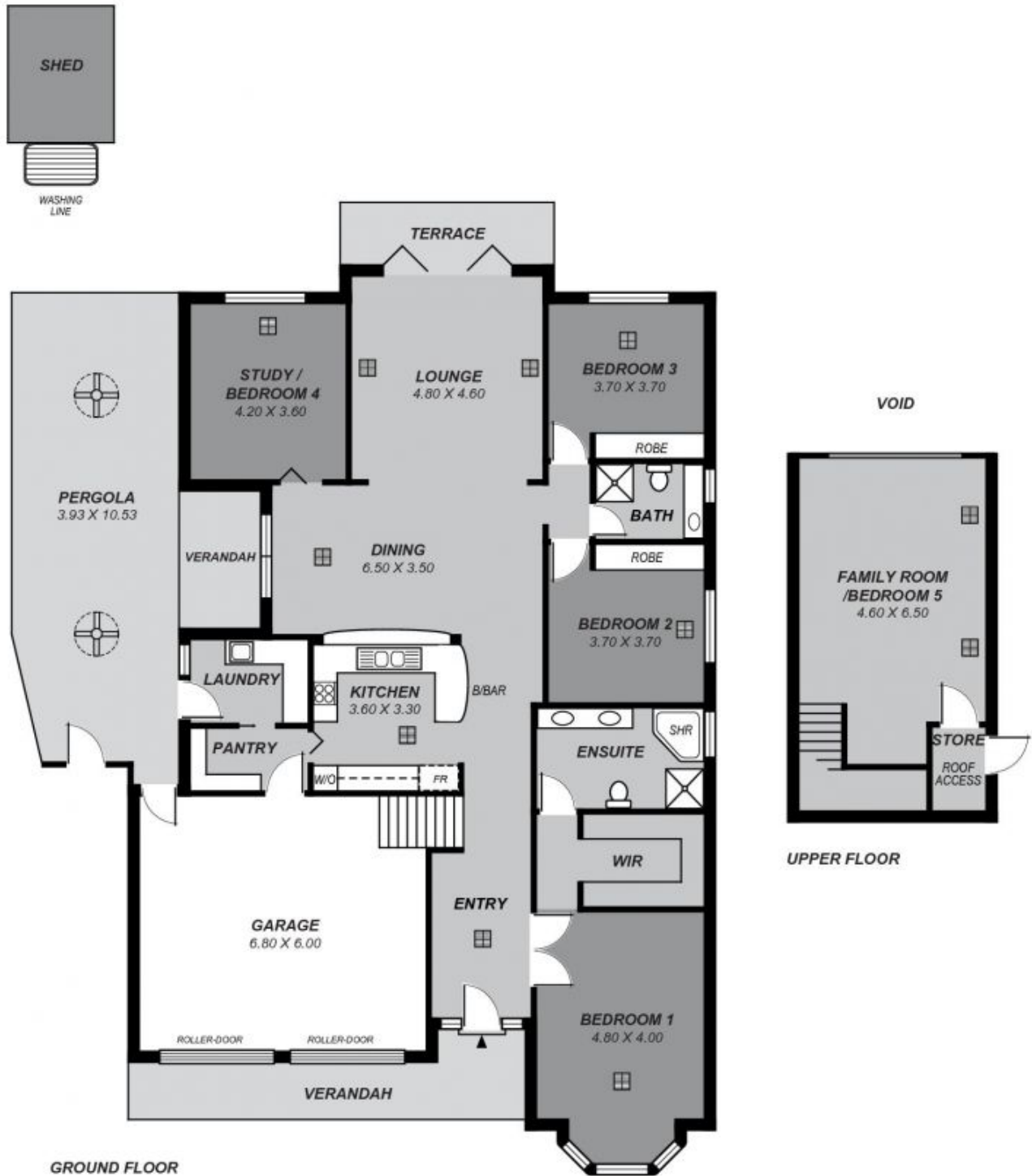
[For full version visit the website](https://www.schinellaproperty.com.au)

Type : House
Building Size : 230 sqm
Land Size : 530 sqm
View : <https://www.schinellaproperty.com.au/5753449>



Damian Popowycz
0413 026 026

<https://www.schinellaproperty.com.au>



Disclaimer : Floor plans & site plans are intended as a guide only. Individuals should always rely on their own enquiries for exact measurements and no warranties are intended or given. Please Note: Any internal area measurement total that may be included does not include any void spaces or recess. An external area measurements total that may be included does not include the total site plan area (i.e. total grounds and garden areas).

Area	m ²
Living:	208
Pergola:	42
Garage:	40
Total:	290