

# SCHINELLA.



427 Military Road Grange SA

4 🏠 3 🚗 5 🚗

Boasting panoramic views over the Adelaide skyline to the CBD and beyond, this imposing tri-level contemporary residence is tailor-made for family lifestyle living.

Behind the private gated entry, a staircase leads to the entry level which comprises the spacious kitchen with stainless steel appliances, and a formal dining room adjoining the large living space, featuring an east-facing wall of glass providing views over the streetscape. There is also a bathroom and large home office/4th bedroom or extra living space with french doors leading to the rear yard.

The second level contains three spacious bedrooms - the main with WIR and ensuite including a spa bath, and bedrooms 2 and 3 with built-in wardrobes. Bedrooms 1 and 2 also access the large east-facing balcony at the front

**Type** : House  
**Price** : \$ 1,055,000  
**Land Size** : 585 sqm  
**View** : <https://www.schinellaproperty.com.au/5726038>



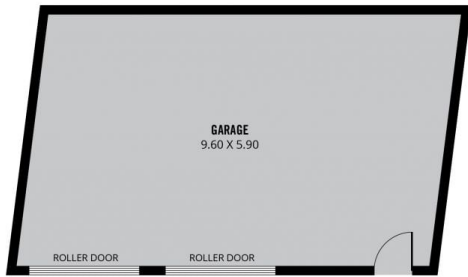
**Damian Popowycz**  
0413 026 026



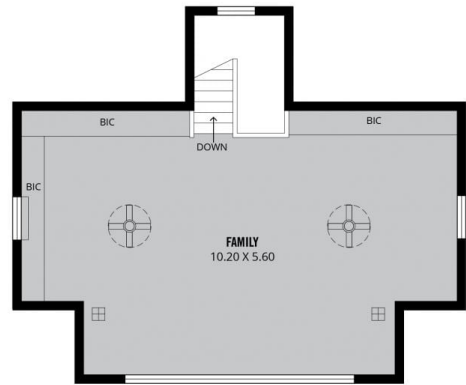
**Mick Mehicic**  
0412452262

[For full version visit the website](https://www.schinellaproperty.com.au)

<https://www.schinellaproperty.com.au>



RWT



Scale in metres. This drawing is for illustration purposes only. All measurements are approximate and details intended to be relied upon should be independently verified.

Produced by The Fatkase Group